

The Bristol A-D

4 Bedrooms | 2.5 Bathrooms | 3 Car Garage

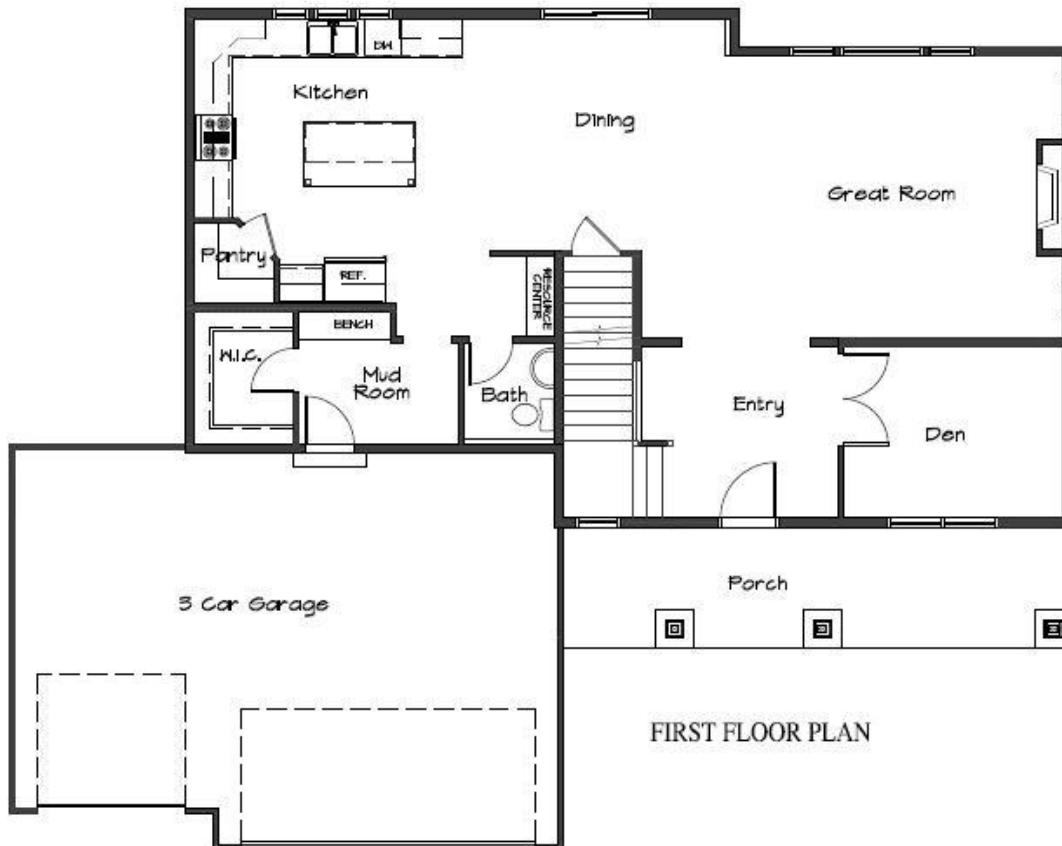


Elevation A

2,470 finished square feet

The Bristol A-D

4 Bedrooms | 2.5 Bathrooms | 3 Car Garage



Plans, specifications, included features, available options and elevations are subject to change without notice. Front elevations and floor plans are artist drawings and may not be completely accurate. Builder License #BC627670.