

The Portland

2 Bedroom | 2 Bathrooms | 2 Car Garage

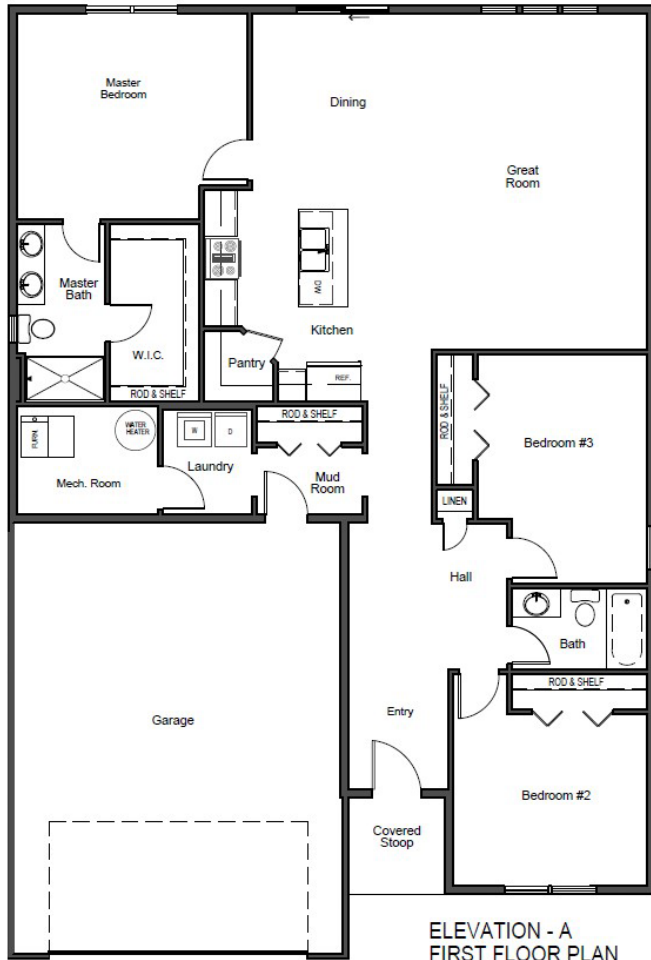


1,690 finished square feet

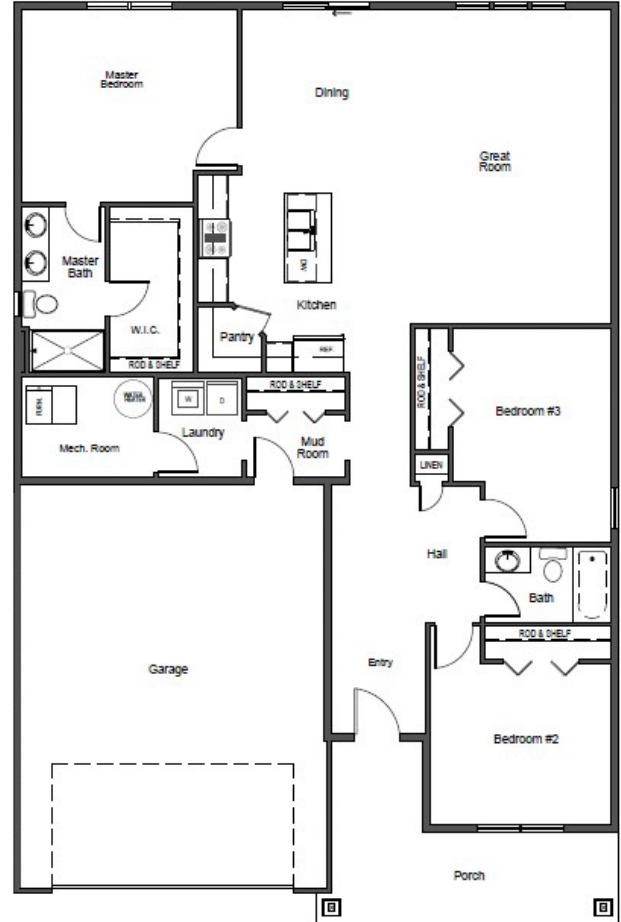


The Portland

2 Bedrooms | 2 Bathrooms | 2 Car Garage



ELEVATION - A
FIRST FLOOR PLAN



ELEVATION - B
FIRST FLOOR PLAN

OPTIONAL COVERED PATIO

