

The Portland

3 Bedroom 2 Bathrooms 2 Car Garage



Elevation A
1,690 finished square feet



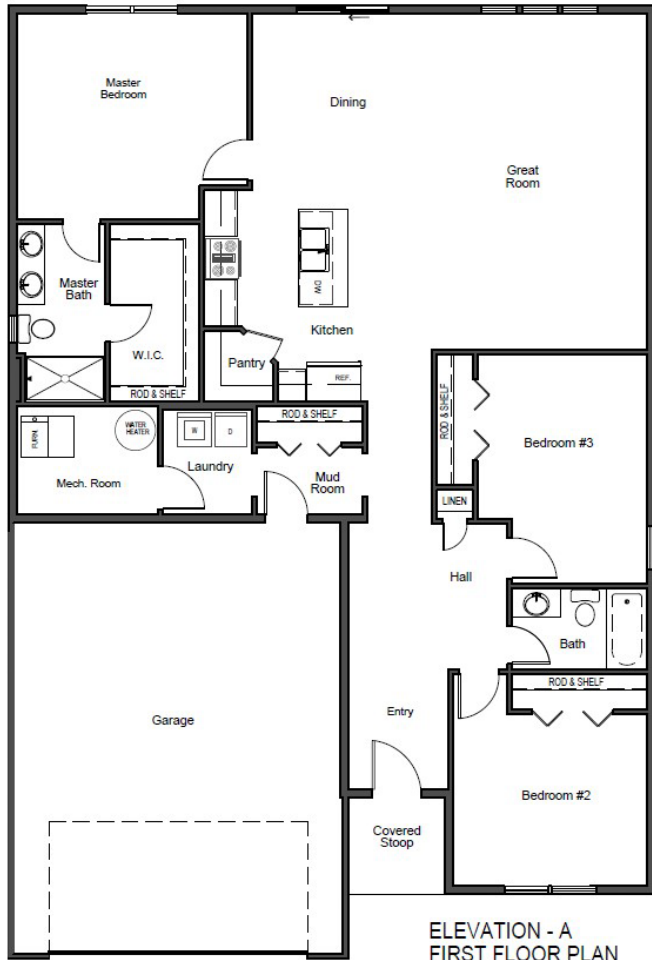
Elevation B

Plans, specifications, included features, available options and elevations are subject to change without notice.
Front elevations and floor plans are artist drawings and may not be completely accurate.
Builder License #BC627670.

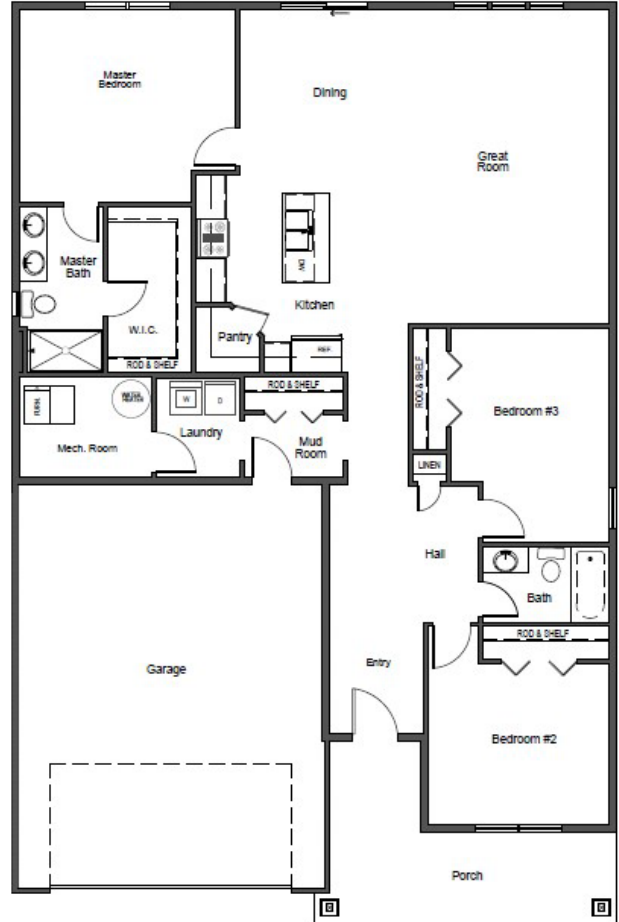
03/08/23

The Portland

3 Bedrooms 2 Bathrooms 2 Car Garage

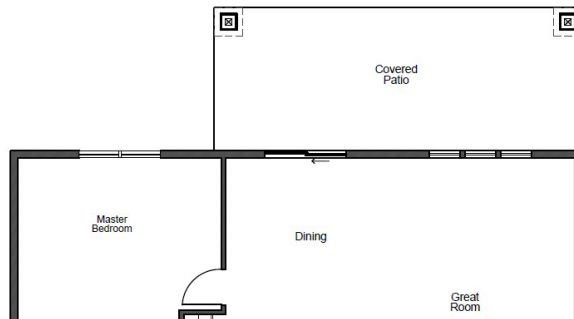


ELEVATION - A
FIRST FLOOR PLAN



ELEVATION - B
FIRST FLOOR PLAN

OPTIONAL COVERED PATIO



Plans, specifications, included features, available options and elevations are subject to change without notice. Front elevations and floor plans are artist drawings and may not be completely accurate. Builder License #BC627670.

03/08/23